

# Commande du PCB

## Téléchargement du gerber ☐☐

Afin de commander les PCB, nous avons besoins du [gerber](#) de celui-ci


“ Le format de fichier **Gerber** est le standard de-facto utilisé pour transmettre des informations concernant la fabrication des [circuits imprimés](#). Il contient la description des diverses couches de connexions électriques (les pistes, les pastilles, les plages [CMS](#), les [vias](#)...).

Vous pouvez les télécharger sur github

☐☐ Gerbers: [https://github.com/usini/m1d1\\_36/releases](https://github.com/usini/m1d1_36/releases)

### First version




Edit

 [maditnerd](#) released this 28 days ago · [4 commits](#) to master since this release

v1.0

Dump v1.0

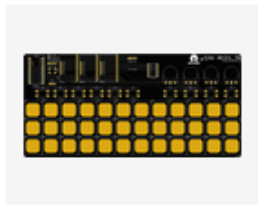
▼ Assets 4

 <a href="#">m1d1_36_arduino_v1.zip</a>	220 KB
 <a href="#">m1d1_36_gerbers_v1.zip</a>	228 KB
 <a href="#">Source code (zip)</a>	
 <a href="#">Source code (tar.gz)</a>	

## Commande du PCB ☐☐

Après avoir essayer plusieurs fournisseurs, le seul a avoir un prix raisonnable pour un PCB de cette taille est JLCPCB.

5 exemplaires du PCB coûtent 12.16€, et en livraison rapide le tout revient à 28.69€ soit 5,7€ le PCB.



PCB Prototype  
Order Number: Y37-2419210A  
5 pcs €12.16  
Build Time:3 days  
[Product Details](#)

[m1d1\\_36\\_gerbbers\\_Y37](#)

[Production file](#)

✓ Production Completed

Quality Complaint

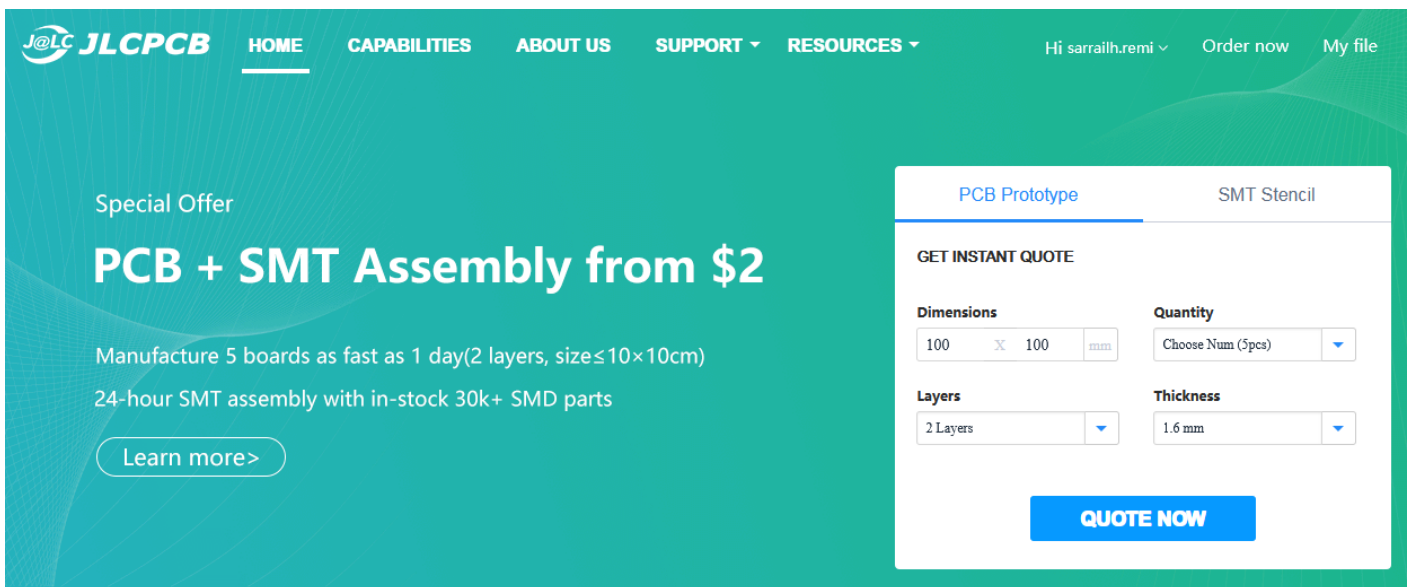
Merchandise Total: €12.16

Shipping Charge: €16.53

Order Total: €28.69

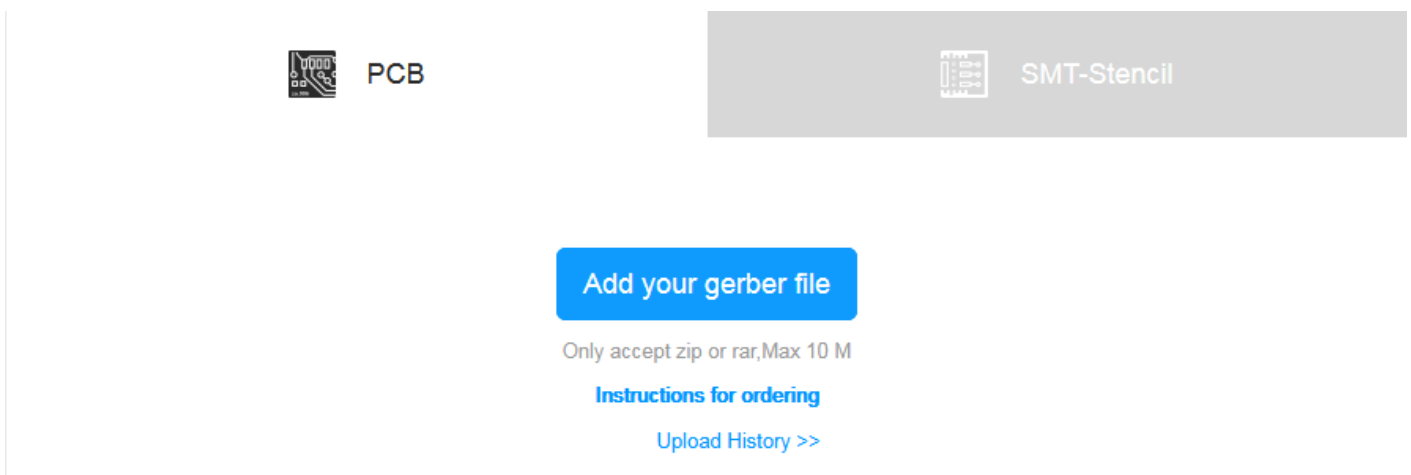
Toutefois la commande d'un PCB est a peu près identique sur chaque plateforme, voici les étapes pour commander le PCB

Aller sur <https://jlcpcb.com/> puis cliquer sur **QUOTE NOW**



The screenshot shows the JLCPCB website interface. At the top, there is a navigation bar with links for HOME, CAPABILITIES, ABOUT US, SUPPORT, and RESOURCES. A user profile 'Hi sarrailh.remi' and 'Order now' button are visible. The main content area features a 'Special Offer' for 'PCB + SMT Assembly from \$2', with details about manufacturing 5 boards in 1 day and 24-hour SMT assembly. A 'Learn more >' button is present. On the right, a 'GET INSTANT QUOTE' form is displayed, with tabs for 'PCB Prototype' and 'SMT Stencil'. The form includes input fields for 'Dimensions' (100 x 100 mm), 'Quantity' (Choose Num (5pcs)), 'Layers' (2 Layers), and 'Thickness' (1.6 mm). A prominent blue 'QUOTE NOW' button is at the bottom of the form.

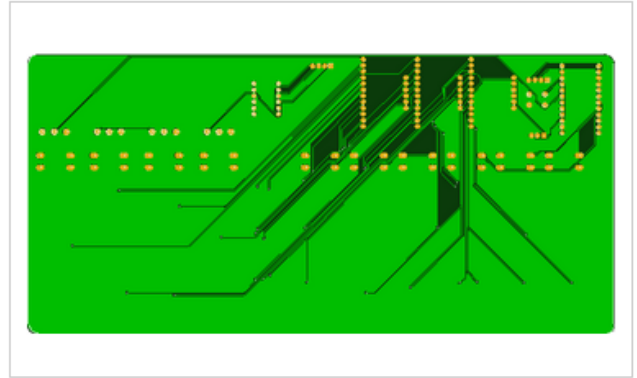
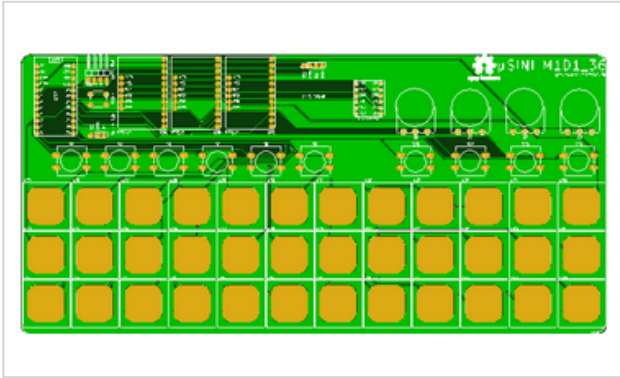
Cliquer sur le bouton **Add your gerbers** et ajouter le fichier **m1d1\_36\_gerbbers\_v1.zip** 📁



The screenshot shows the 'Add your gerber file' section of the JLCPCB website. It features two tabs: 'PCB' and 'SMT-Stencil'. Below the tabs is a large blue button labeled 'Add your gerber file'. Underneath the button, it states 'Only accept zip or rar, Max 10 M'. There are also links for 'Instructions for ordering' and 'Upload History >>'.

Detected 2 layer board of 117x244mm(4.6x9.62 inches) .

Your upload has finished processing. Enter the project details below and we'll move on to checking all the individual layers to make sure that they're correct.



The gerber viewer is for reference purpose only and may differ from the actual PCB product.

[Gerber Viewer](#) 

✔ Success, this file has been saved to your [File Manager](#)

Vous n'avez pas besoin de changer la moindre option, mais si vous voulez la couleur noir (par ex.) vous pouvez la changer ici (**cela augmentera la durée de fabrication**)

PCB Color 

Green

Red

Yellow

Blue

White

Black

- Cliquer sur **Save to Cart**
- Cliquer sur **Checkout securely**

Revision #3

Created 2020-06-20 11:09:11 UTC

Updated 2020-06-22 10:59:17 UTC